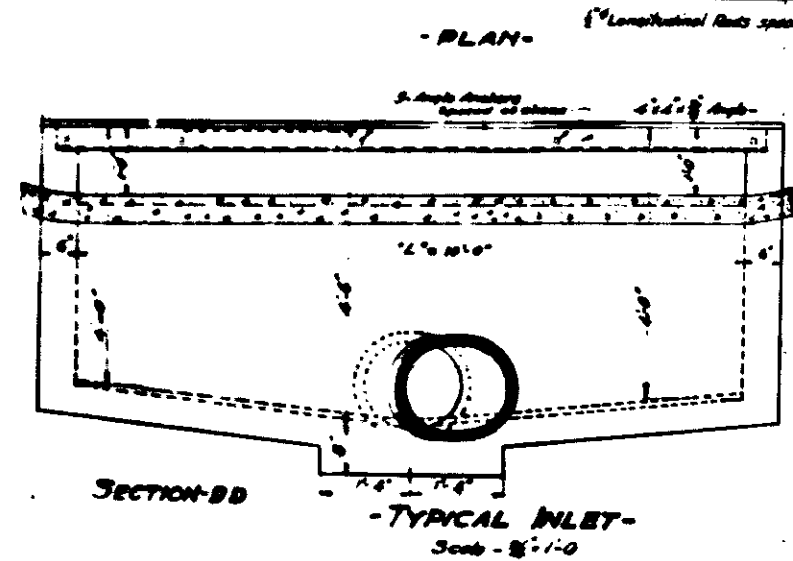
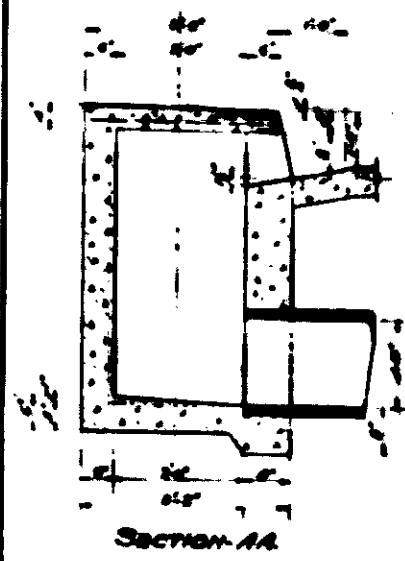
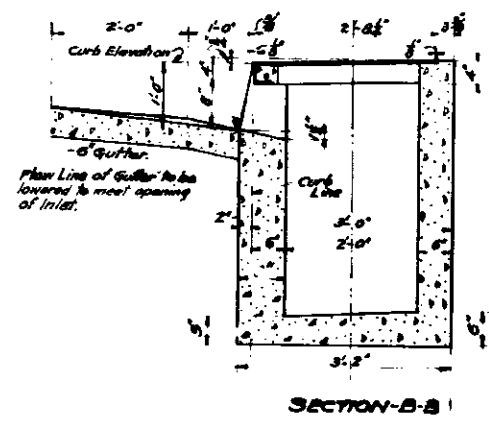
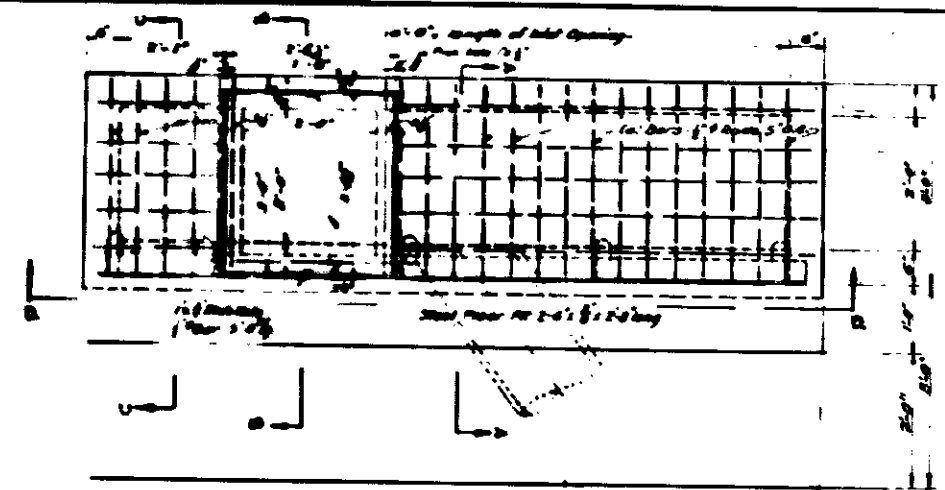


SHEET NO. 3
 PLAN NO. 1888
 FOR THE IMPROVEMENT OF
SECOND STREET
 FROM
 "K" STREET TO VIADUCT BOULEVARD
 SAN BERNARDINO
 CALIFORNIA

JUNE 1940

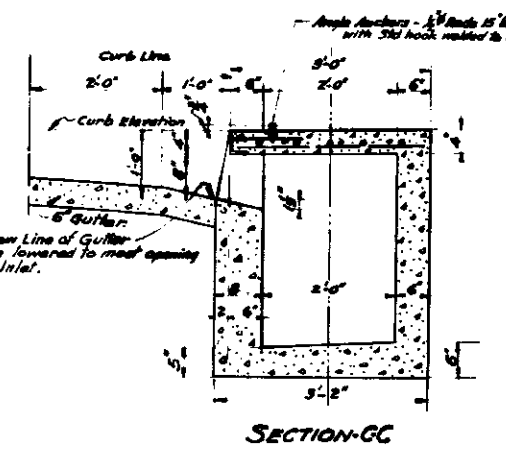
R.D. Forsythe
 R.D. FORSYTHE
 CIVIL ENGINEER
 1111 N. G ST. PASADENA, CALIF.

- Sheet No. 3 of 3 Sheets -



- TYPICAL INLET -
 Scale - 3/4" = 1'-0"

- DETAIL OF INLET -
 at station 0+57.90-52' R. -

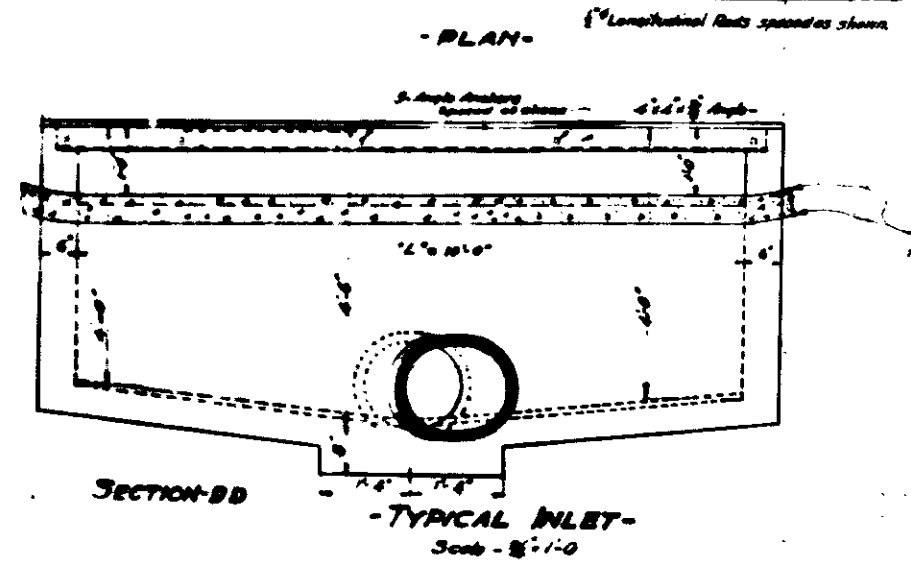
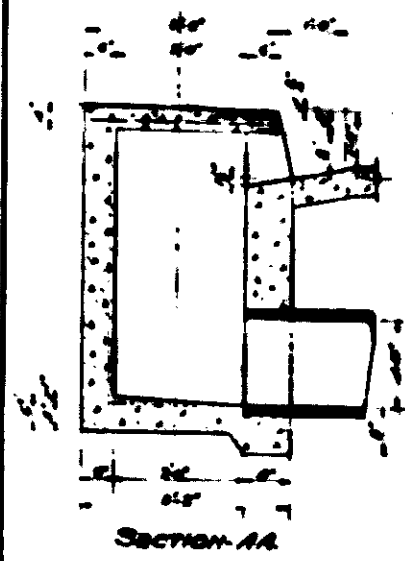
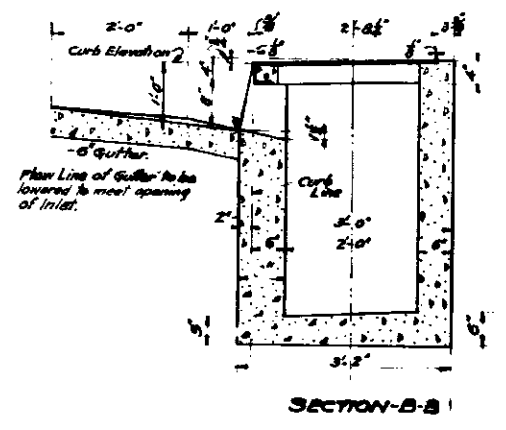
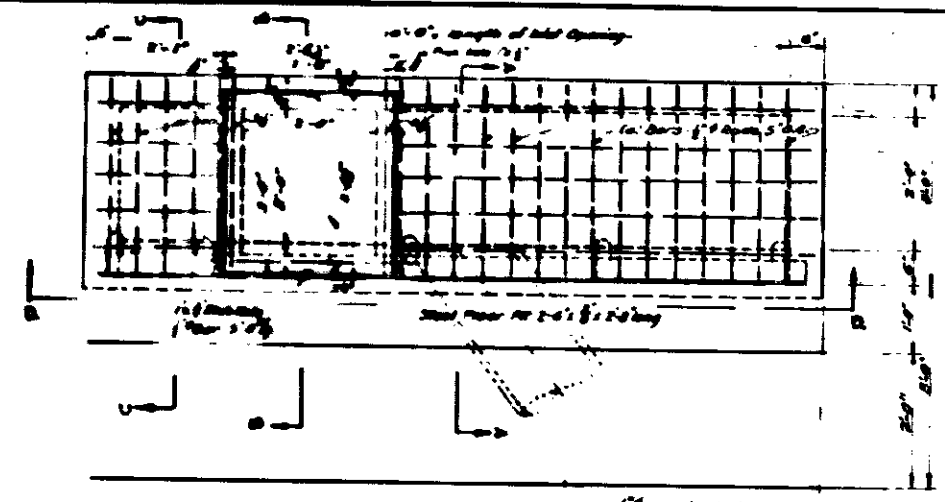


SHEET NO. 3
 PLAN NO. 1888
 FOR THE IMPROVEMENT OF
SECOND STREET
 FROM
 K STREET TO VIADUCT BOULEVARD
 SAN BERNARDINO
 CALIFORNIA

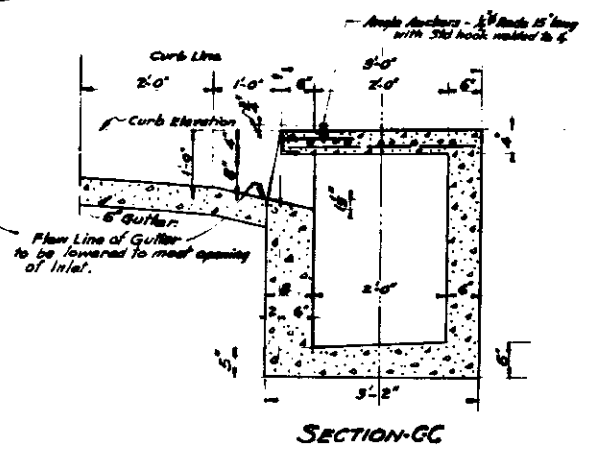
JUNE 1940


 R.D. FORTY THE
 CIVIL ENGINEER
 CIVIL ENGINEER

- Sheet No. 3 of 3 Sheets -



- TYPICAL INLET -
Scale - 3/4" = 1'-0"



- DETAIL OF INLET -
 at station 0+57.90-52' R. -